



Flat 15, Meadow House

Toad Lane | Blackwater | Camberley | GU17 9AH

Offers In Excess Of £190,000

Waterford's
Residential Sales & Lettings

Flat 15, Meadow

Toad Lane | Blackwater

Camberley | GU17 9AH

Offers In Excess Of £190,000

NO ONWARD CHAIN - 990 yr lease, luxury apartment, new boiler, Smart technology, ent. hall, store cbd, southerly living room, kitchen with appliances inc.. allocated parking.

- Luxury penthouse apartment
- Smart Home technology
- Entry phone system with fob
- South facing living room
- Kitchen with appliances included
- Allocated Parking
- Council Tax Band B

Location

Description

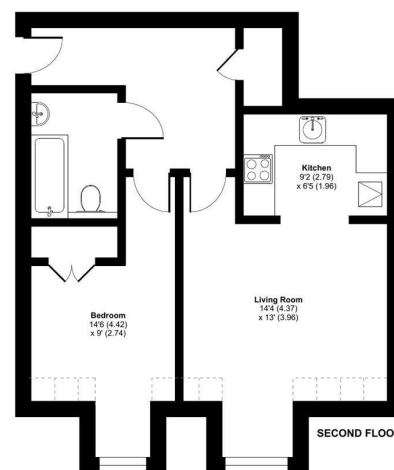
Outside



Denotes restricted head height

Meadow House, Toad Lane, Blackwater, Camberley, GU17

Approximate Area = 510 sq ft / 47.3 sq m
Limited Use Area(s) = 21 sq ft / 2 sq m
Total = 531 sq ft / 49.3 sq m
For identification only - Not to scale



Floor plan produced in accordance with RICS Property Measurement Standards incorporating International Property Measurement Standards (IPMS Residential). © richrecom 2023. Produced for Waterfords. REF: 980062



Energy Efficiency Rating		
	Current	Potential
Very energy efficient - lower running costs		
(92 plus) A		
(81-91) B		
(69-80) C	75	75
(55-68) D		
(39-54) E		
(21-38) F		
(1-20) G		
Not energy efficient - higher running costs		
England & Wales	EU Directive 2002/91/EC	

35 Plough Road

Yateley

Hampshire

GU46 7UW

01252 870222

yateley@waterfords.co.uk

<https://www.waterfords.cc>